

The future of AI in Accounting and Finance

Mathias Karady, VP Product, Sage
November 2024



Let's talk about the elephant in the room

PROMPT: analog style photo of an old dimly lit room with an elephant standing in it, elephant in the room. Dust, details, lighting, amateur photography, shadows.



Sage

percipient

© 2023 The Sage Group plc, or its licensors. All rights reserved.

Generative AI

Generative AI describes algorithms (such as ChatGPT, GPT-4, etc.) that can be used to create new content, including audio, images, text, code, etc.

Large Language Models (LLMs) are a type of Generative AI which incorporate large amounts of text and predict possible completions of a given prompt.

GPT models (and similar) are LLMs now capable of "human-like" performance in a broad range of tasks



10:27

Thursday, February 6

Notification Center



POKÉMON GO

now

Why not step outside for a bit?



EMERGENCY ALERTS

2m ago

Emergency Alert

NWS: TORNADO WARNING in this area til 11:00 AM EST. Take shelter now. Check media.

AA

Here's a joke for you. A skeleton walks in to a bar and says "I'll have a beer and a mop!"



Haha, that's a good one! The joke plays on the fact that a skeleton, being made of bones with no organs or tissues, would not be able to consume the beer like a living person. Instead, the beer would simply flow through its bones and make a mess on the floor, hence the need for a mop. It's a clever and amusing twist on a typical bar joke. Thanks for sharing it!



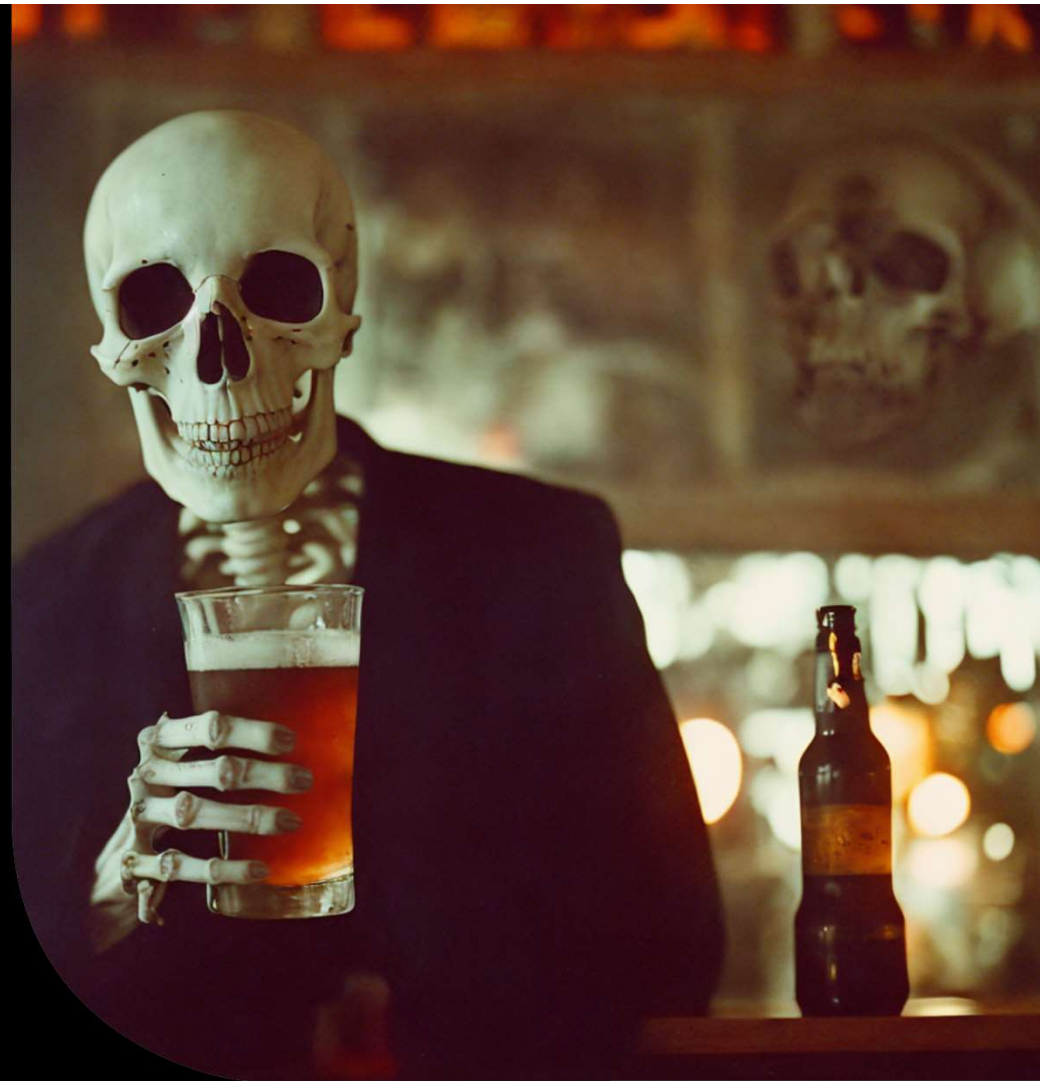
If you'd like to hear more jokes or discuss other topics, feel free to ask!

Regenerate response

Send a message.



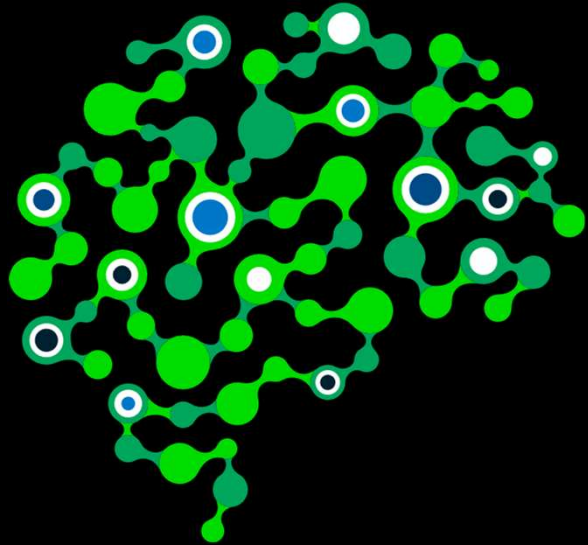
ChatGPT may produce inaccurate information about people, places, or facts. [ChatGPT Mar 23 Version](#)



Sage

percipient

© 2023 The Sage Group plc, or its licensors. All rights reserved.



1 AI can reason



2 AI understands the world



Symbolic AI

Systems that focus on logic and rules to simulate human behavior.



Connectionist AI

Systems that use networks to simulate the human brain's structure.



Invention

New markets

Immediate
commercial
application

Catalyst for
infrastructure
development

Discovery

New industries

Long-term
economic
transformation

Accelerant for
further
innovation



**“How did you go
bankrupt?”**

**Two ways. Slowly,
then suddenly.”**

- Ernest Hemingway

Suddenly ...

1. Computing power
2. Available data
3. Consumption pricing
4. Open source



People vs AI

WIRED BACKCHANNEL BUSINESS CULTURE DEAR IDEAS POLITICS SCIENCE SECURITY MERCH

WILL WALSH BUSINESS MAR 9, 2023 12:00 PM

Yes, ChatGPT Is Coming for Your Office Job

World Economic Forum [+ Add to myPT](#)

Generative artificial intelligence will lead to job cuts this year, CEOs say

Impact of cutting-edge AI tools on work and society set to dominate discussions at World Economic Forum in Davos

FORBES > INNOVATION > VENTURE CAPITAL

How AI Is Changing The Future Of Work

Elon Musk [insists artificial intelligence](#) will get humans to a point where "no job is needed."

Business ► Economics Banking Money Markets Project Syndicate B2B Retail

Artificial intelligence (AI) AI will affect 40% of jobs and probably worsen inequality, says IMF head

'Crucial' that countries build social safety nets to mitigate impact on workers, says Kristalina Georgieva

[Business live - latest updates](#)

GIZMODO

ARTIFICIAL INTELLIGENCE

OpenAI Says Stonemasons Should Be Fine in the Brave New World

Research led by ChatGPT creators OpenAI doesn't say AI will take your job, but LLMs are trying to automate tasks by writers, UI designers, and programmers.

By **Kyle Barr**
Published March 20, 2023 | Comments (7) | Alerts

[Twitter](#) [Facebook](#) [Reddit](#) [Email](#) [Link](#)

Photo: VesnaArt (Shutterstock)

**“You won’t be replaced
by AI.**

**You’ll be replaced by
someone who uses AI
better than you.”**

The generative AI opportunity

1. Engage and empower everyone to access accounting
2. Advance from simple task automation to autonomous workflow with human control



SAP Easy Access



- Favorites
- SAP menu
 - Office
 - Cross-Application Components
 - Logistics
 - Materials Management
 - Purchasing
 - Purchase Order
 - Purchase Requisition
 - Create**
 - Change
 - Display
 - Mass Maintenance
 - Release
 - List Displays
 - Follow-On Functions
 - Outline Agreement
 - RFQ/Quotation
 - Master Data
 - Environment
 - Inventory Management
 - Logistics Invoice Verification
 - Physical Inventory
 - Valuation
 - Material Requirements Planning (MRP)
 - Service Entry Sheet
 - Service Master
 - Foreign Trade/Customs

Purchase Requisition Edit Environment System Help

Create Purchase Requisition

Document Overview On Personal Setting Save As Template Load from Template

ZNB PURCHASE REQ... Source Determination

Header

St.	Item	A	I	Material	Short Text	Quantity	Unit	Delivery Dat.	Matl Group	Plant	Stor. Loc.	PG	Requisnr.	Tracking	Des. Vendor	Fixed Vend
	10			1100120	INT BRINE	4.000	KG	10/22/20	12 PRE	HERI			E12			

Item 1 [10] 110012098 , INT BRINE NEX SUG&LE...

Material Data Quantities/Dates Valuation Source of Supply Status Contact Person Release strategy Texts Delivery Address

Material 110012098 Short Text INT BRINE

Batch Revision Level

Material Group 120040

Vendor Mat.

Meet people where they work

The screenshot shows a spreadsheet titled "Statement of Cash Flows Forecast For month ending March 31st, 2023". The spreadsheet is organized into sections: Cash balance at the beginning of the month, Receipts (Predicted), and Cash Outflows. The Receipts section lists "The Green Thumb Cafe", "Sweet Treats Bakery", and "The Book Nook Cafe". The Cash Outflows section lists "Payroll", "Account Payables", "Office Furniture (Budgeted)", and "Kitchen Upgrade (Budgeted)". The "Ending Cash" row is currently empty.

	A	B	C	D
1				
2				
3				
4				
5				
6				
7				
8				
9				
10				
11				
12				
13				
14				
15				
16				
17				
18				
19				
20				
21				
22				
23				

Sage Paciolli

Hi Carl, what can I do for you?

What is my forecasted cash balance at the end of the month?

Your ending cash balance will be **\$225,000**. Your current cash balance is **\$150,000**. Of your outstanding Accounts Receivable balance of **\$320,000**, you are predicted to collect **\$250,000**. Including payroll, your Accounts Payable balance due this month, and your planned capital expenditures, your cash outflows will be **\$175,000**. [View details](#)

Type a new message

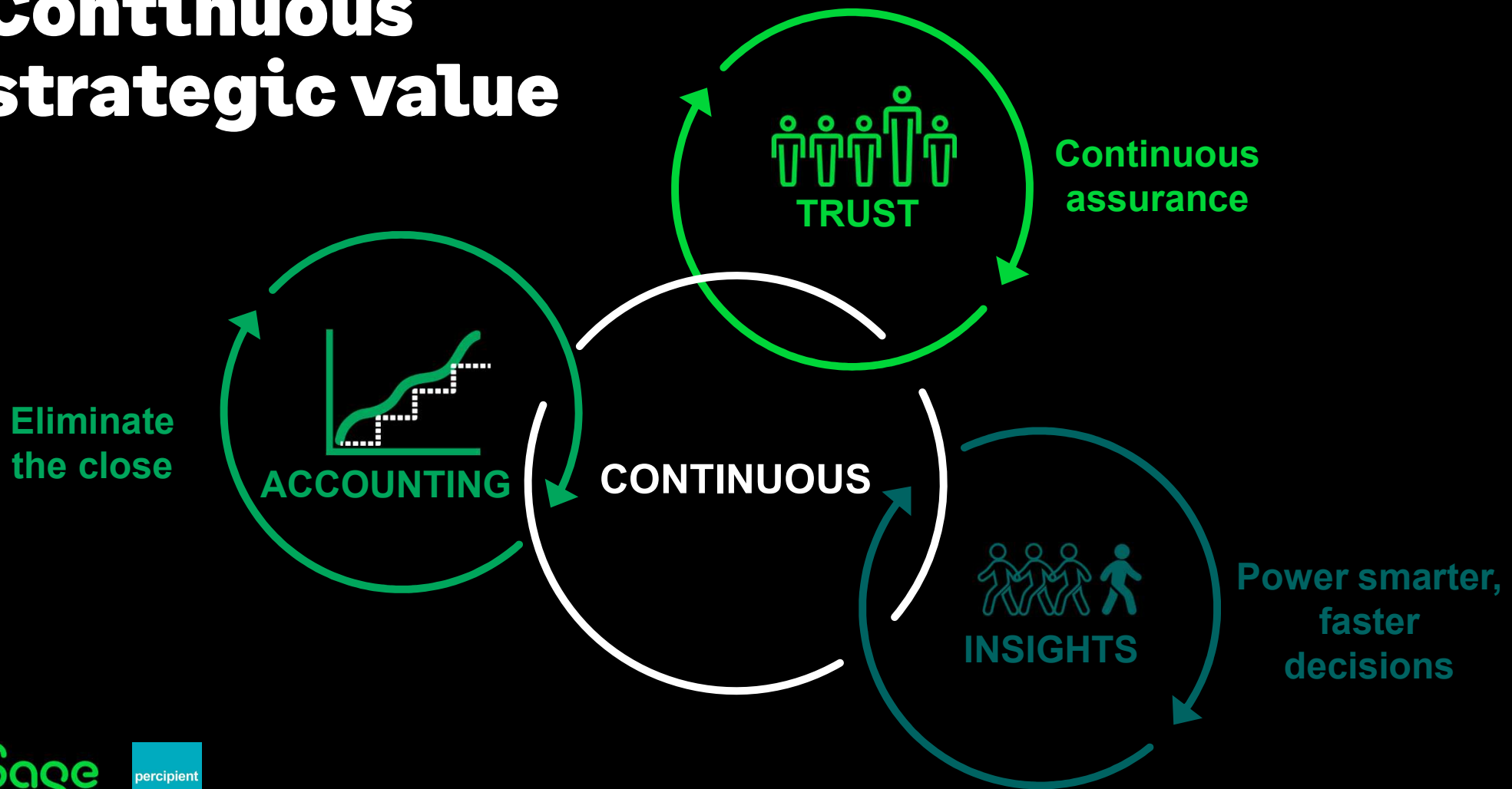


The screenshot shows a chat window titled "Sage Paciolli". The chat history includes the same question and answer as the previous screenshot. The answer text is: "Your ending cash balance will be **\$225,000**. Your current cash balance is **\$150,000**. Of your outstanding Accounts Receivable balance of **\$320,000**, you are predicted to collect **\$250,000**. Including payroll, your Accounts Payable balance due this month, and your planned capital expenditures, your cash outflows will be **\$175,000**. [View details](#)". The chat interface includes a "Type a new message" input field and various icons for attachments, emojis, and sending.

The promise of automation and AI is rapidly changing the external context, impacting SMB roles



Continuous strategic value



Scenario 1: Automation with human control

AP clerk, Sarah, logs into Sage Intacct and lands on Intacct product homepage

Nudge from Sage Copilot appears top right of Sage Intacct product screen

Sage Copilot: Hi, Sarah. Please take a look at the tasks I completed while you were away and the ones that require your input.

CTA: [Open Sage Copilot] [Remind me later]

Sarah clicks on [Open Sage Copilot]

Sage Copilot drawer opens

Scenario 1: Automation with human control

Sage Copilot: Hi, Sarah. Here's an update on the accounts payable tasks I've completed. Please review and approve:

Activity	Actions
Processed 15 invoices totaling \$59,233.96	[View list] [Approve] [Reject]
Requested 4 employees to approve 6 of the processed invoices	[View list]
Created 18 payment requests totaling \$85,003.48	[View list] [Approve] [Reject]
Contacted 3 vendors to request they review and confirm their tax information in the Sage Network app	[View list]

Scenario 1: Automation with human control

Sage Copilot: I have found some issues that I need your help to resolve:

Activity	Actions
An invoice arrived from Vendor K, but that vendor is not approved yet.	[Review] [Approve]
An invoice arrived from Vendor R for \$15,000. This is substantially higher than the historical range between \$564.45 and \$1,272.82.	[Review] [View Vendor R ledger]
I apologize, but I'm not confident I've coded invoice Y24001 correctly.	[Review]

Scenario 2: Accounting teams are always chasing

This conversation between Sage Copilot and Hotel Manager Kate happens in Microsoft Teams

Teams notification comes in from Sage Copilot

Sage Copilot: Hi, Kate. Accounting needs an estimate on how much open PO-46738 will be invoiced by month-end. [[Click here to view PO-46738](#)]

Sage Copilot: Here's a quick history of invoices against PO-46738:

Invoice	Date	Amount
INV-324	2024-02-23	\$2,500
INV-465	2024-02-16	\$3,200
INV-998	2024-02-09	\$2,500

[\[See all invoices\]](#)

Scenario 2: Accounting teams are always chasing

Sage Copilot: I suggest accruing \$12,500 based on historical spend.

Kate: Agreed. I'll go with that.

Sage Copilot: Perfect! If anything changes, let us know. Thanks!

Scenario 3: Chasing time sheets

**This conversation between Sage Copilot and maintenance employee Tom happens via text message*

SMS notification comes in from Sage Copilot

Sage Copilot: Hi Tom, please take a look at your timesheet for this week that I've generated automatically. [[View timesheet in Sage Intelligent Time](#)]

Sage Copilot: I noticed a gap on Friday afternoon. Based on information from Sage HR, it looks like you took the afternoon off. Can you please confirm?

Anderson, Tom: Yes, that's correct. I took the afternoon off for a personal appointment.

Sage Copilot: Thanks for confirming, Tom. It helps us to ensure accurate billing. If you have any additional details, please let us know.

Scenario 4: There's been a change to the cashflow forecast

This conversation between Sage Copilot and Finance Director Jane happens in Microsoft Teams

Teams notification comes in from Sage Copilot

Sage Copilot: Hi Jane, I have identified a change to the cash flow forecast. We will have approximately \$200,000 more available cash to start next month than was initially projected. Two factors have contributed to the improved forecast. First, our Hammersmith franchise has performed ahead of forecast. Second, our utility costs have been lower than our assumptions.

Shows graph with a single line representing historical cash balance splitting into two lines on today – the previous and the updated forecast

Scenario 4: There's been a change to the cashflow forecast

Jane: What are some options for spending the extra cash?

Sage Copilot: I have identified three potential options. First, we could increase our marketing spend. Our marketing ROI is above industry average, indicating that the cash would be efficiently spent. I can also show you how this investment would impact sales forecasts in [\[SIBP\]](#).

Next, we have a credit note with an outstanding balance of \$175,000. Paying this credit note early would save \$27,534 over the remaining 22 months.

Finally, we have planned capital improvements for our Park Lane location beginning four months from now. These could be brought forward.



“I don’t trust it”

“It doesn’t matter what you automate, a human will always be accountable.”

“AI won’t be signing audit reports, you will.”

Thank you!

Come see Percipient at Booth 20



© 2024 The Sage Group plc or its licensors. All rights reserved. Sage, Sage logos, and Sage product and service names mentioned herein are the trademarks of Sage Global Services Limited or its licensors. All other trademarks are the property of their respective owners.